

# ECEDHA Open Forum 2015

March 13-17, 2015  
ECEDHA Annual Meeting  
Hilton Head, SC

Mark J. T. Smith

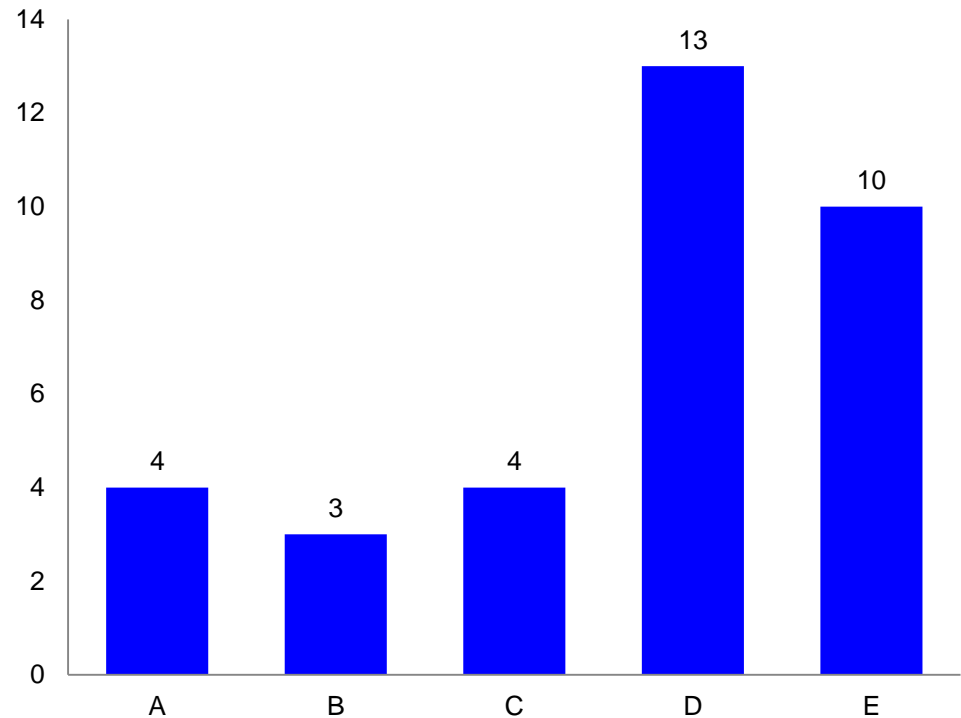
**ECEDHA**

Electrical and  
Computer Engineering  
Department Heads Association

## ABET Question

I found the PEV(s) who reviewed my program in **2011-14** to be fair and reasonable.

- A. Strongly disagree
- B. Disagree
- C. Neutral
- D. Agree
- E. Strongly Agree



# Employment Question

How many faculty positions are you currently trying to fill?

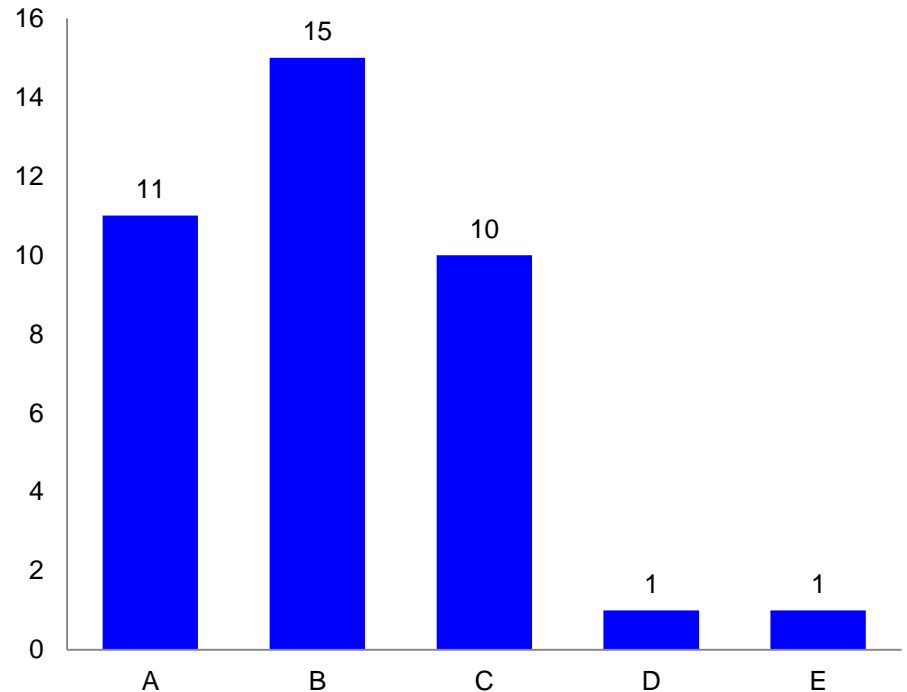
A. none

B. 1-2

C. 3-4

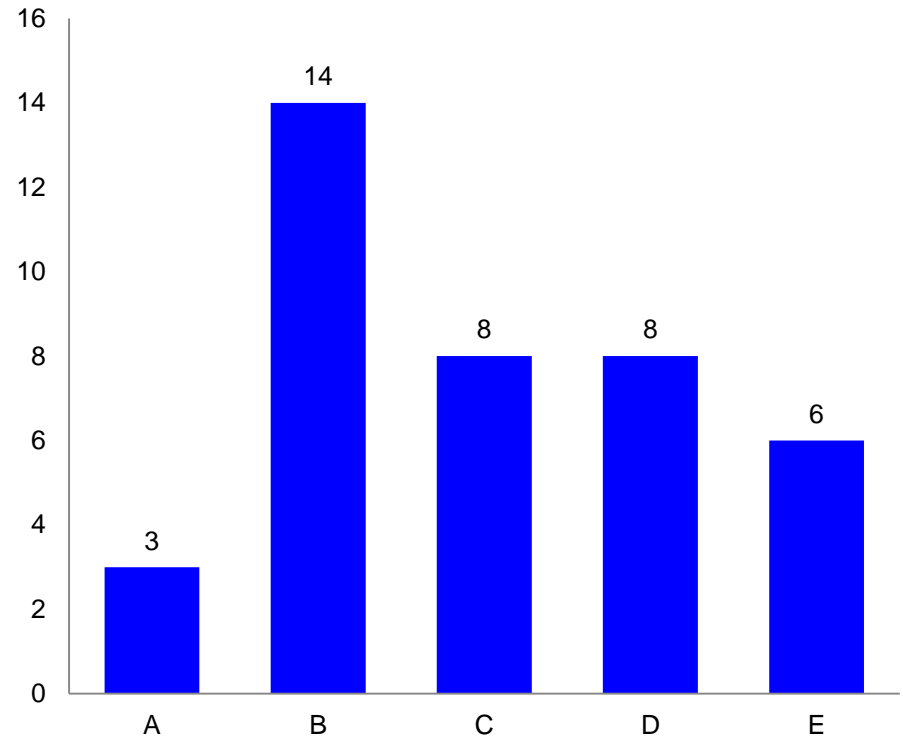
D. 5-6

E. More than 6



**Financial Question:** Relative to the last year or two, the financial picture in my department is good.

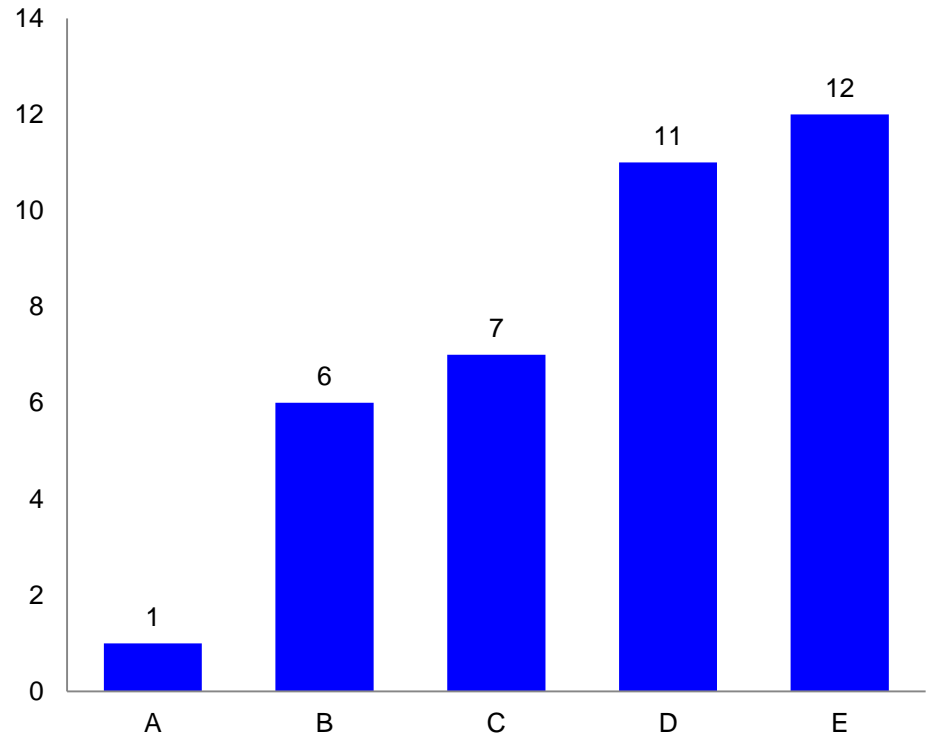
- A. Strongly agree
- B. Agree
- C. Neutral
- D. Disagree
- E. Strongly disagree



# Raise Question:

Relatively speaking, faculty members received (or will receive) good raises this year.

- A. Strongly agree
- B. Agree
- C. Neutral
- D. Disagree
- E. Strongly disagree



# Question

Graduates from my program are finding good jobs.

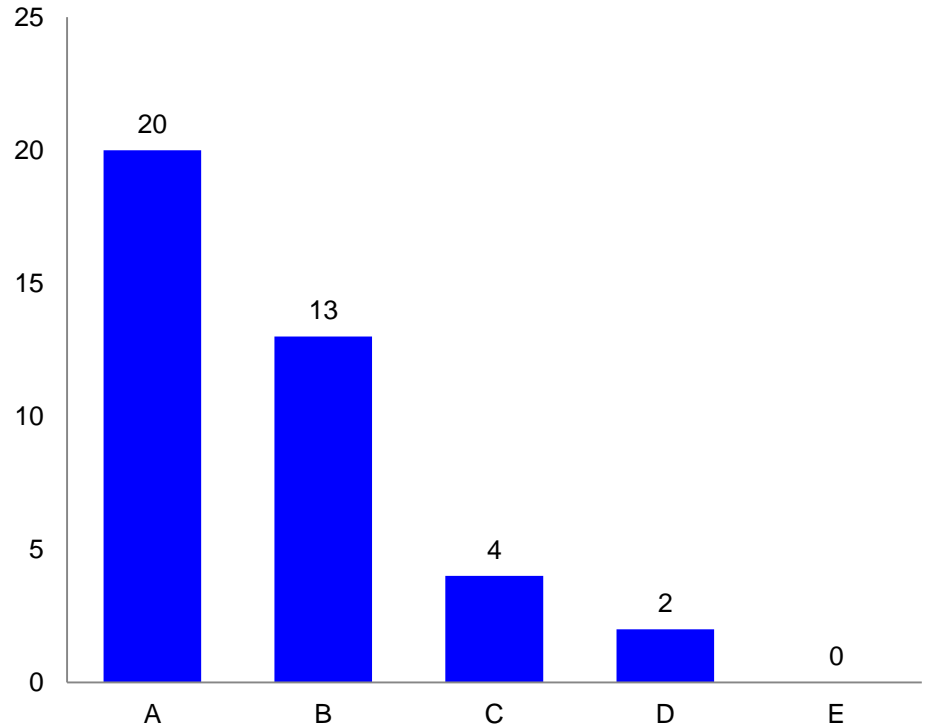
A. Strongly agree

B. Agree

C. Neutral

D. Disagree

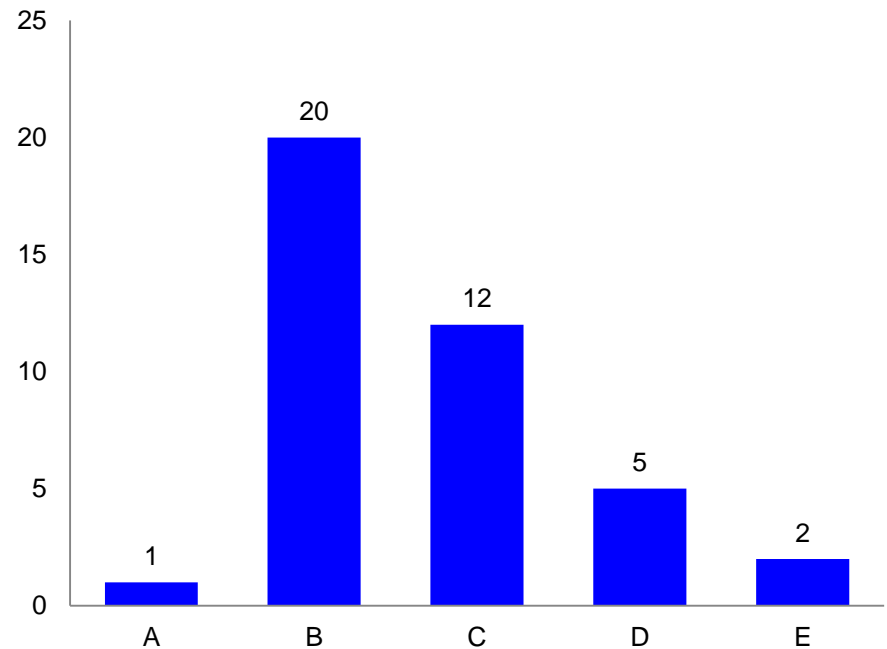
E. Strongly disagree



# Question

How many programming courses do you have in your EE undergraduate program?

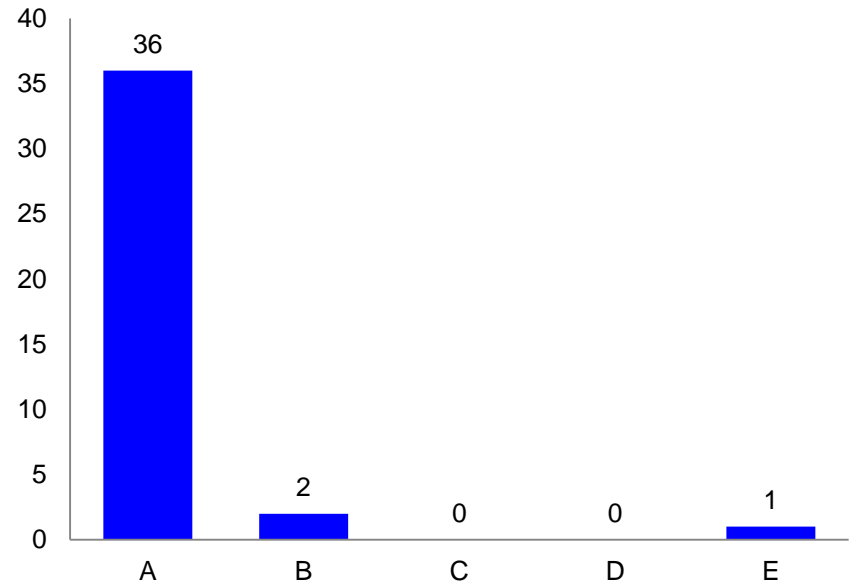
- A none
- B 1
- C 2
- D 3
- E 4 or more



# Question

What operating system is used predominately in your EE undergraduate labs?

- a. MS Windows
- b. Linux
- c. Mac OS X
- d. Other
- e. Not sure

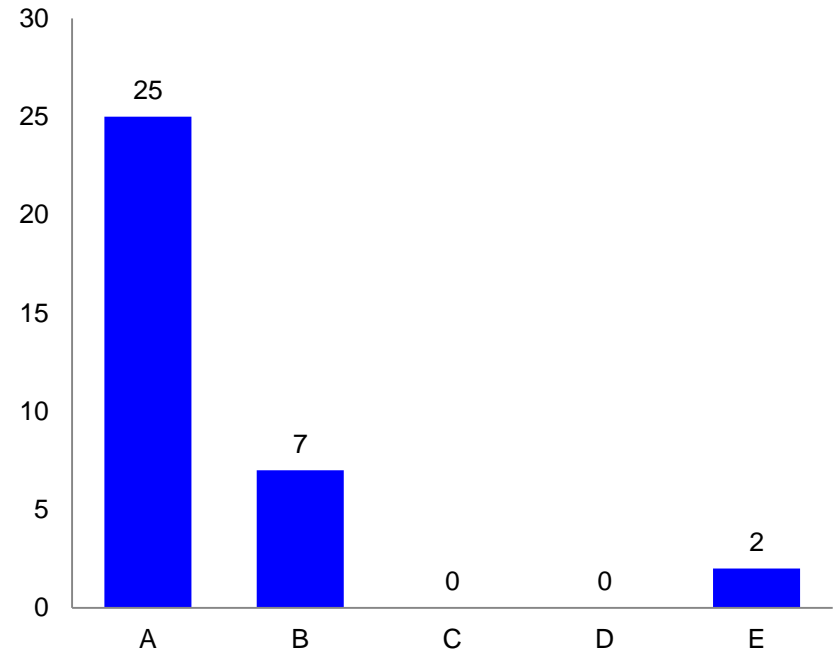




# Question

What operating system is used predominately in your CE undergraduate labs?

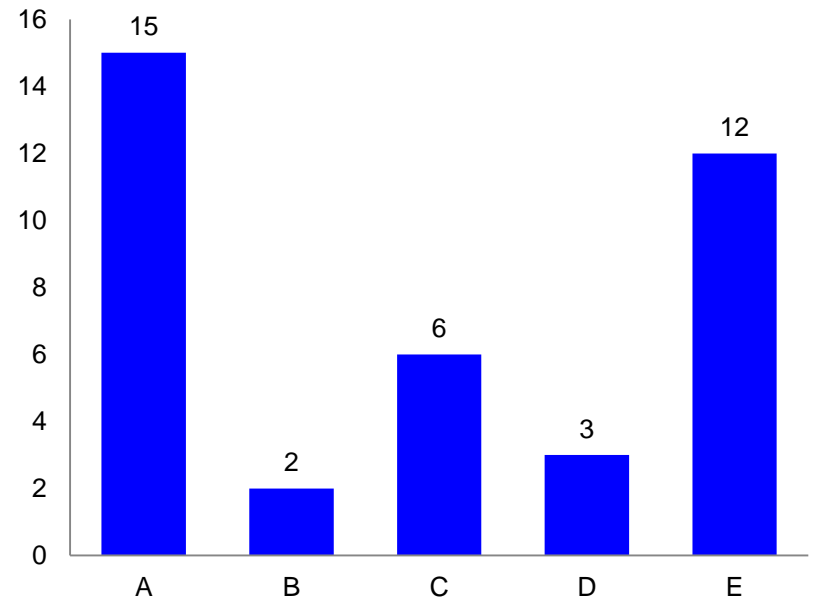
- a. MS Windows
- b. Linux
- c. Mac OS X
- d. Other
- e. Not sure



# Question

My ECE department is experiencing challenges related to supporting/interfacing with bioengineering programs?

- A. Not at all
- B. On a rare occasion
- C. Occasionally
- D. Frequently
- E. Not applicable



# Question

During the ECEDHA Annual Conference, Sunday should be designated as a day off.

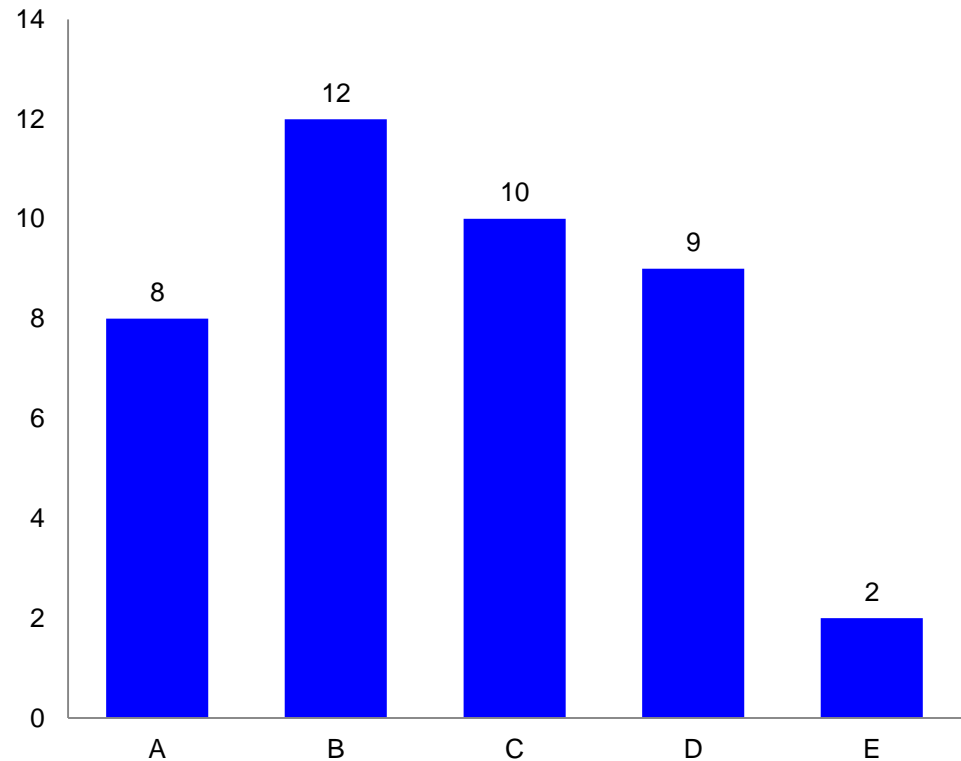
A. Strongly agree

B. Agree

C. Neutral

D. Disagree

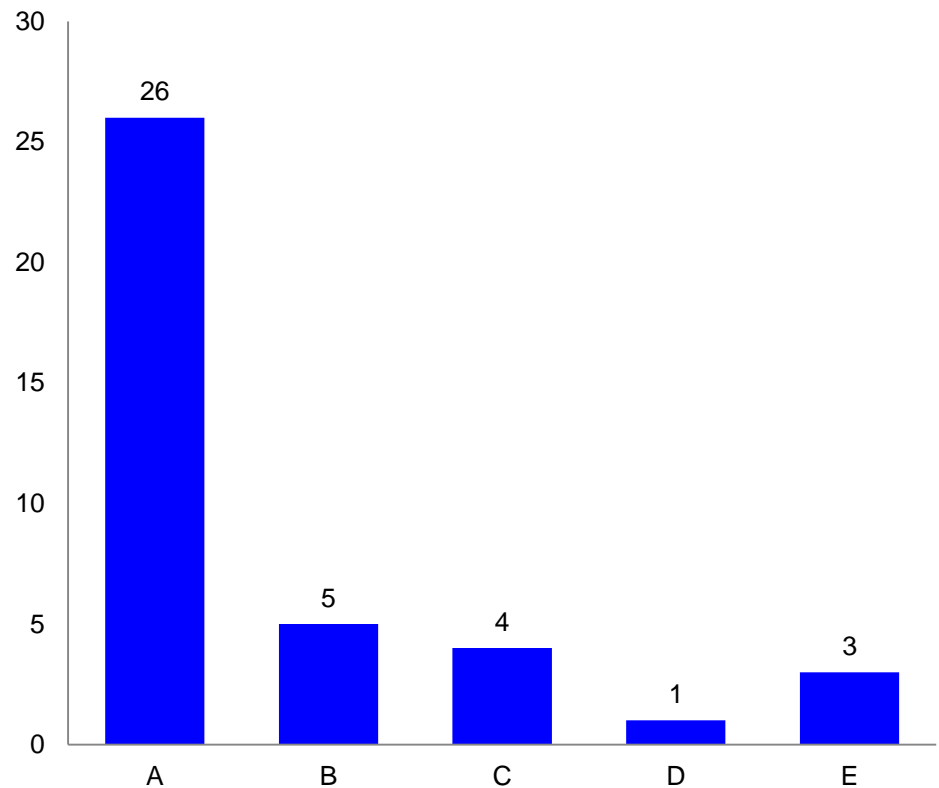
E. Strongly disagree



# Question

What percentage of your department faculty are Professional Engineers (PEs)?

- A) less than 10%
- B) 10% - 20%
- C) 20% - 30%
- D) 30% - 40%
- E) more than 40%

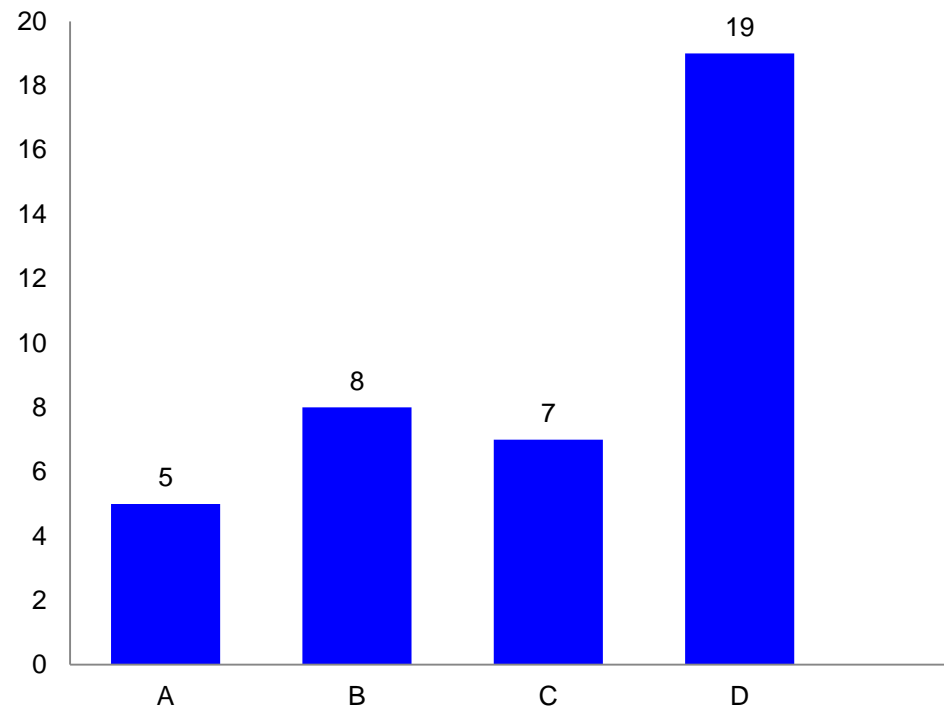


## Set of Questions about IT Staff 1 of 5

### Question

The IT/Computer Tech Staff Reporting structure in my department is best described as follows:

- A. I have one or more IT staff members in the department who report to me.
- B. My department is supported by college level IT staff
- C. My department is supported by university level IT staff
- D. All of the above

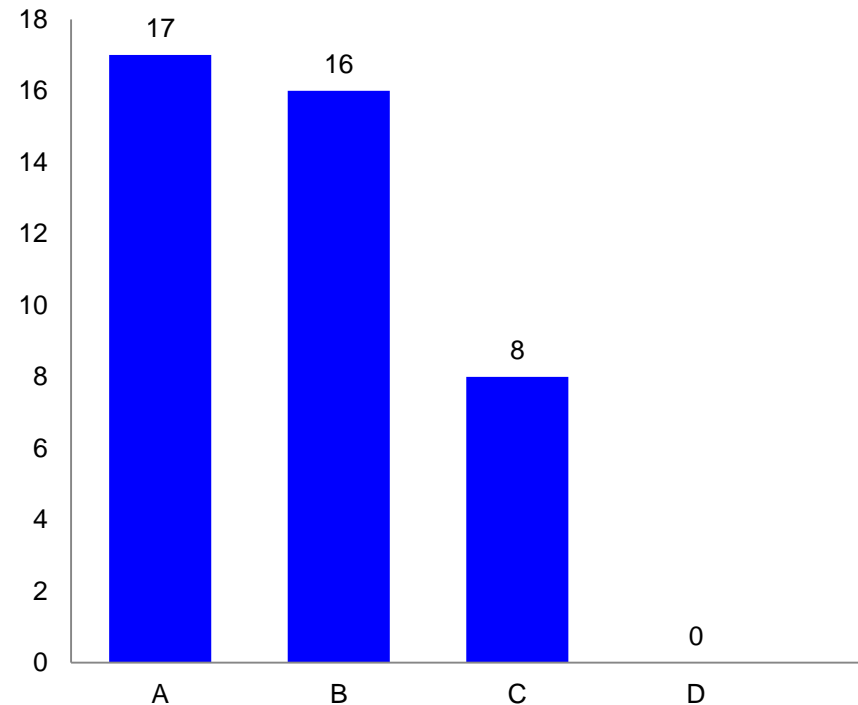


## Set of Questions about IT Staff 2 or 5

### Question

The **PRIMARY** IT/Computer Tech Staff Reporting structure in my department is best described as follows:

- A. I have one or more IT staff members in the department who report to me.
- B. My department is supported by college level IT staff
- C. My department is supported by university level IT staff
- D. All of the above

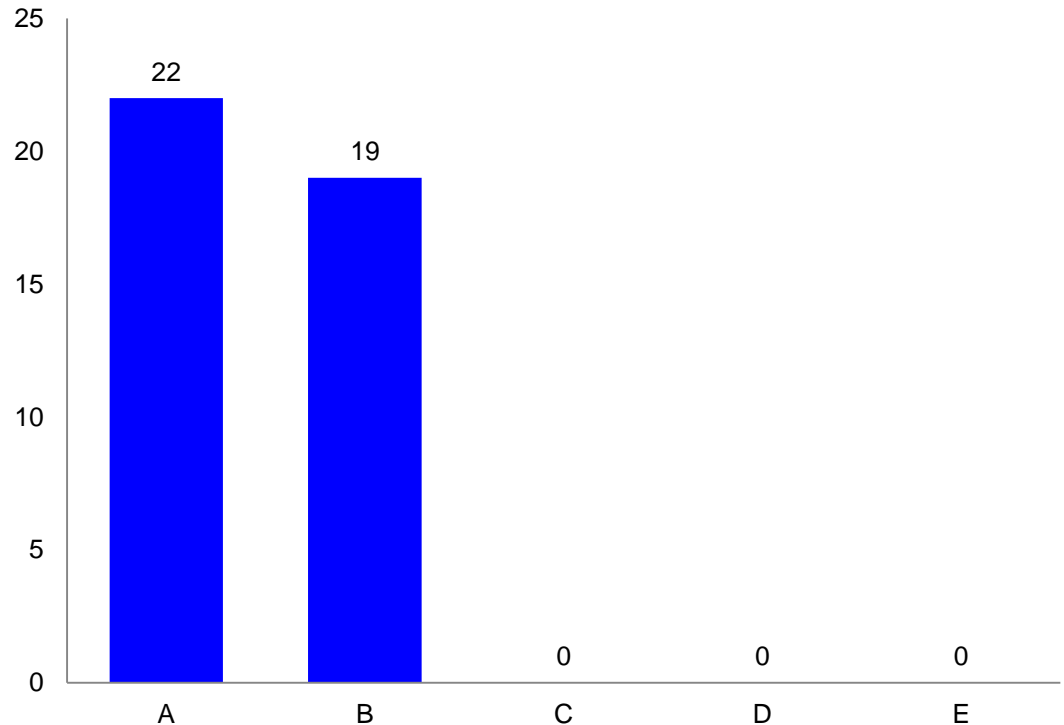


# Set of Questions about IT Staff 3 of 5

## Question

For those who have departmental IT/Computer Tech staff; how satisfied are you with their overall service:

- A. Very satisfied
- B. Satisfied
- C. Neutral
- D. Mildly dissatisfied
- E. Dissatisfied

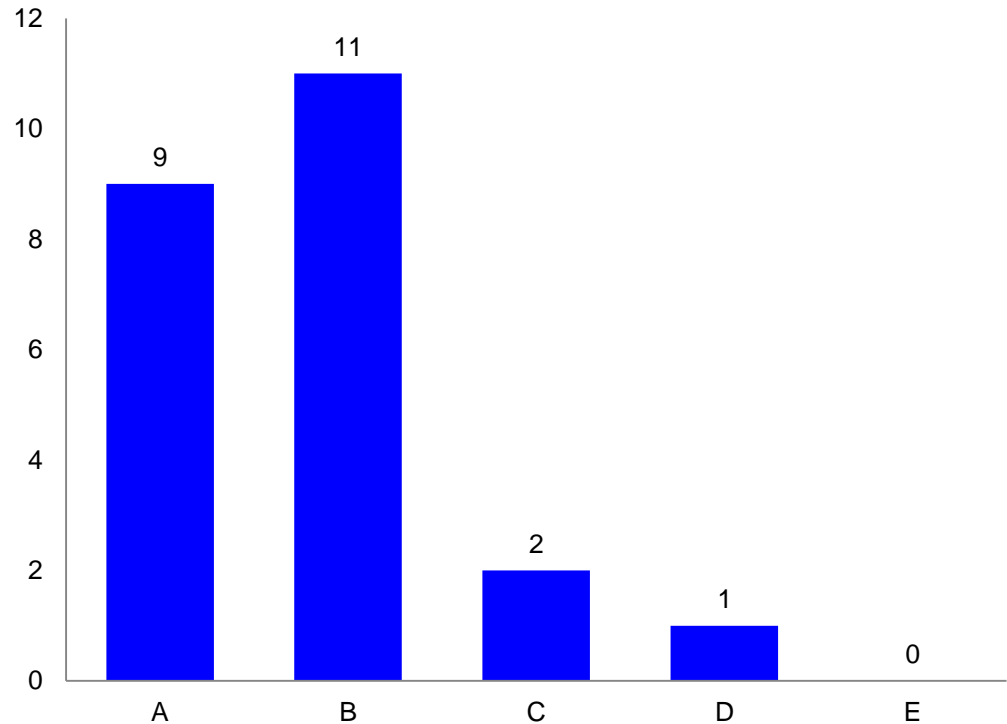


# Set of Questions about IT Staff 4 of 5

## Question

For those with primarily college-level IT/Computer Tech staff; how satisfied are you with overall service:

- A. Very satisfied
- B. Satisfied
- C. Neutral
- D. Mildly dissatisfied
- E. Dissatisfied



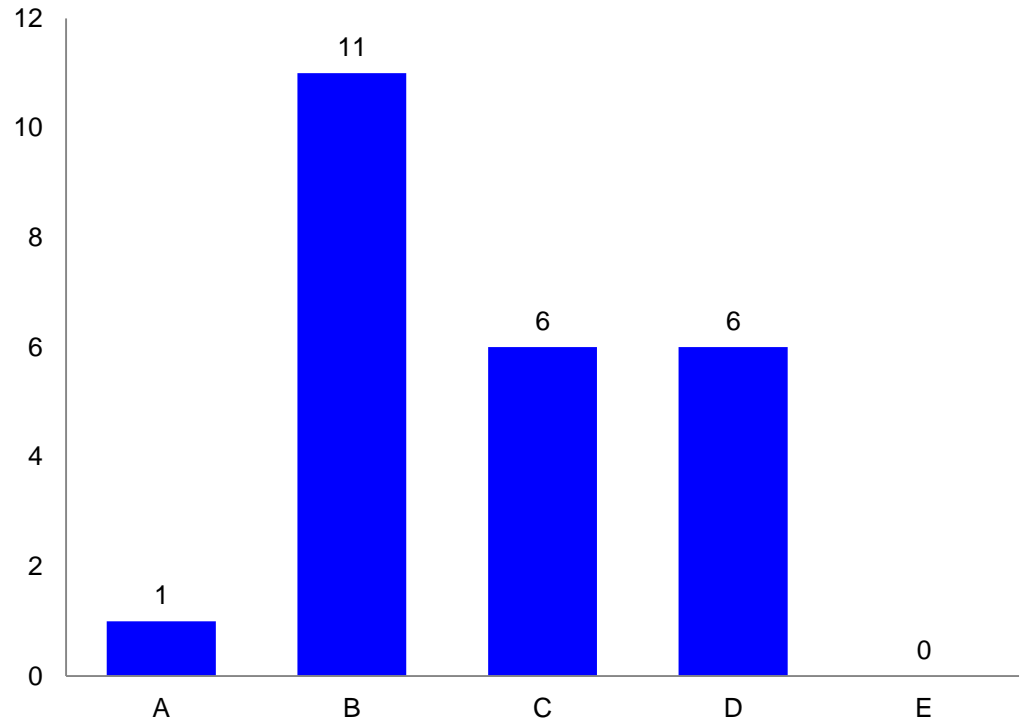


# Set of Questions about IT Staff 5 of 5

## Question

For those with primarily University-level IT/Computer Tech staff; how satisfied are you with overall service:

- A. Very satisfied
- B. Satisfied
- C. Neutral
- D. Mildly dissatisfied
- E. Dissatisfied

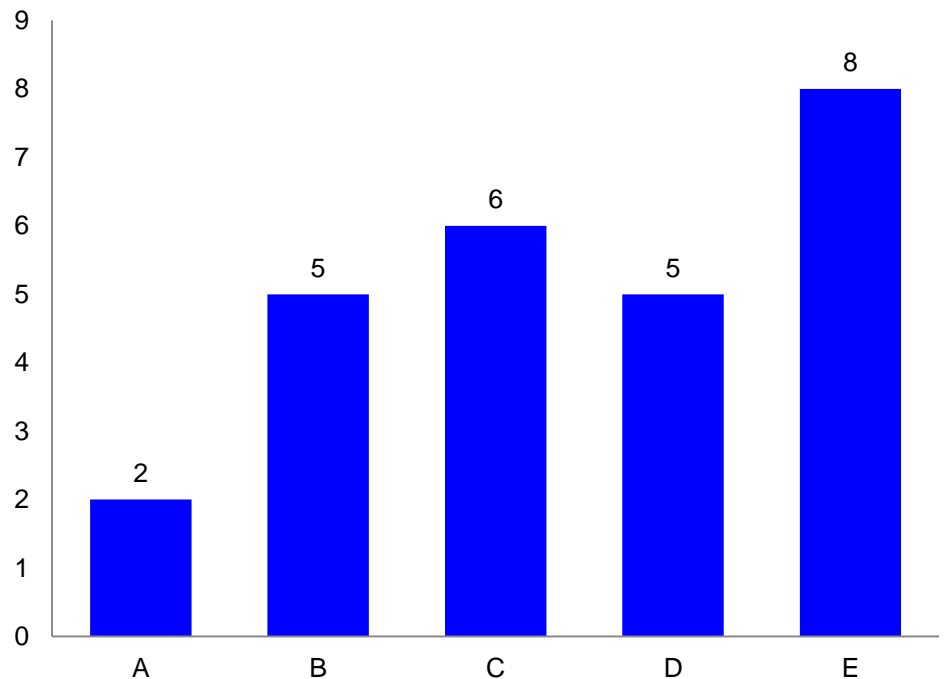


## Set of program session questions 1 of 8

### Question

During the ECEDHA conference, I'd like us to have a panel discussion on "the perspective of Deans on ECE"

- A. Strongly agree
- B. Agree
- C. Neutral
- D. Disagree
- E. Strongly disagree

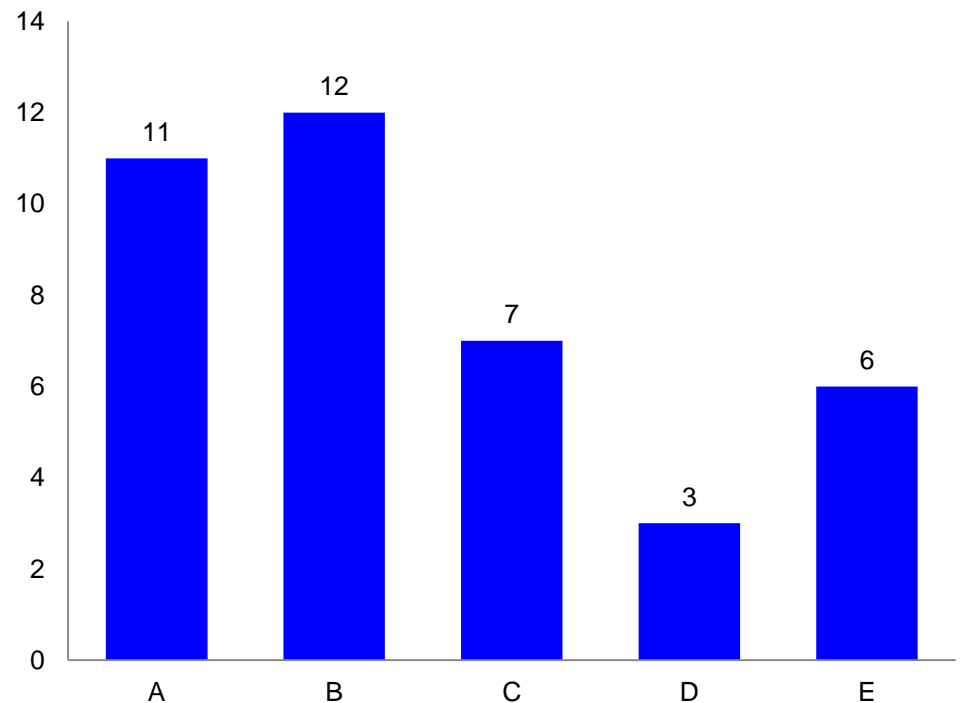


## Set of program session questions 2 of 8

### Question

During the ECEDHA conference, I'd like us to have a panel discussion on “rebranding of ECE”

- A. Strongly agree
- B. Agree
- C. Neutral
- D. Disagree
- E. Strongly disagree

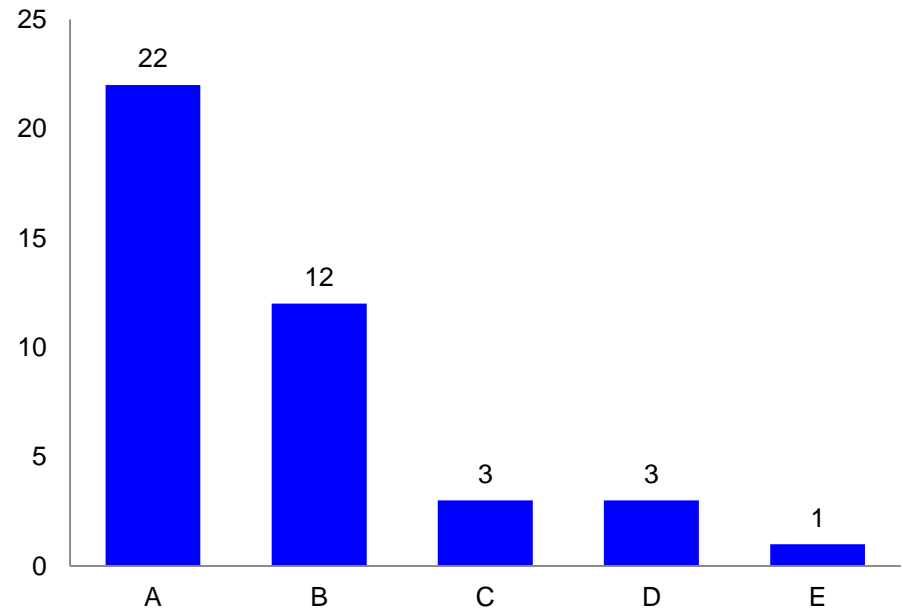


## Set of program session questions 3 of 8

### Question

During the ECEDHA conference, I'd like us to have a panel discussion on "is IEEE doing enough to promote ECE"

- A. Strongly agree
- B. Agree
- C. Neutral
- D. Disagree
- E. Strongly disagree

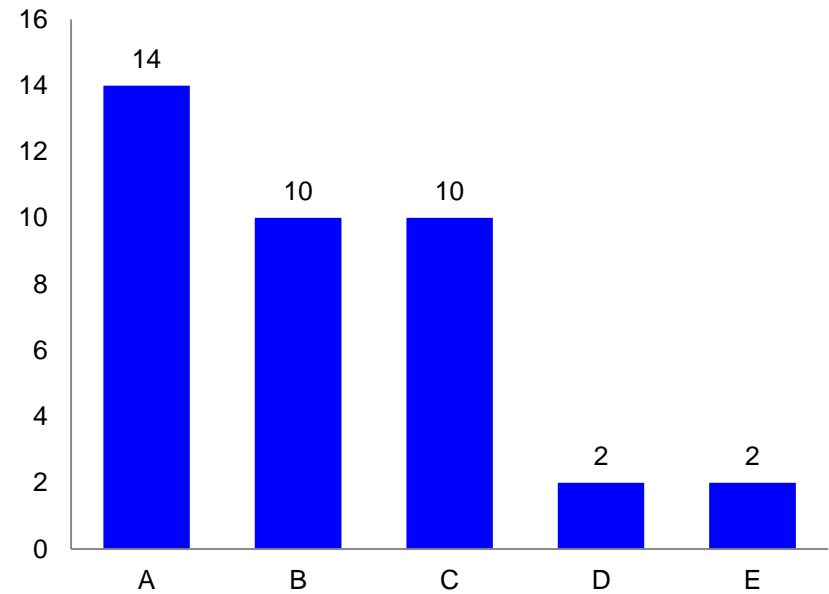


## Set of program session questions 4 of 8

### Question

During the ECEDHA conference, I'd like us to have a panel discussion on “the use of analytics to track student progress”

- A. Strongly agree
- B. Agree
- C. Neutral
- D. Disagree
- E. Strongly disagree

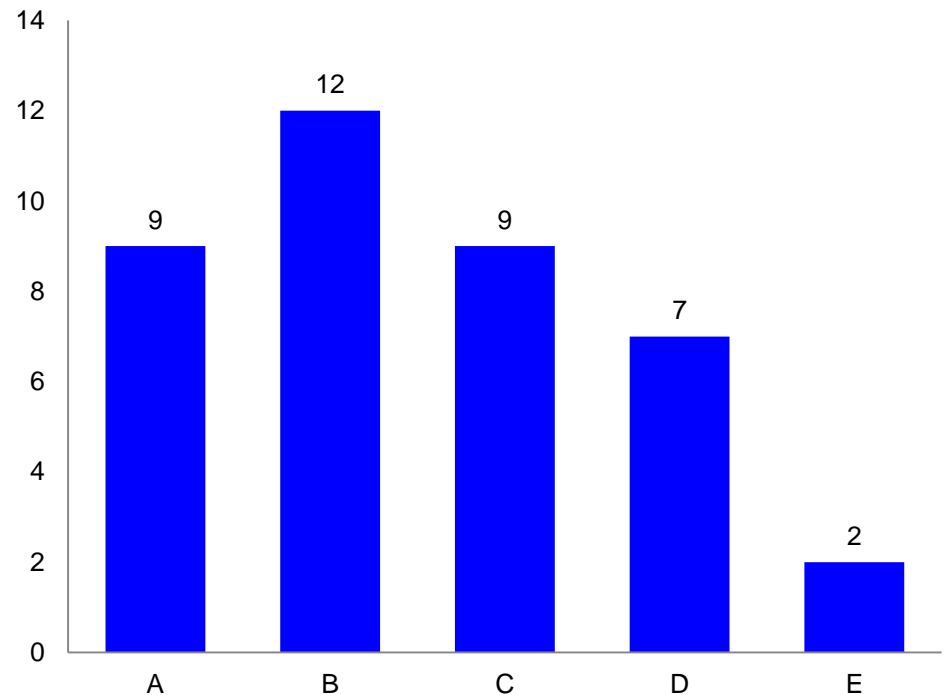


## Set of program session questions 5 of 8

### Question

During the ECEDHA conference, I'd like us to have a panel discussion on “smart grid or power”

- A. Strongly agree
- B. Agree
- C. Neutral
- D. Disagree
- E. Strongly disagree

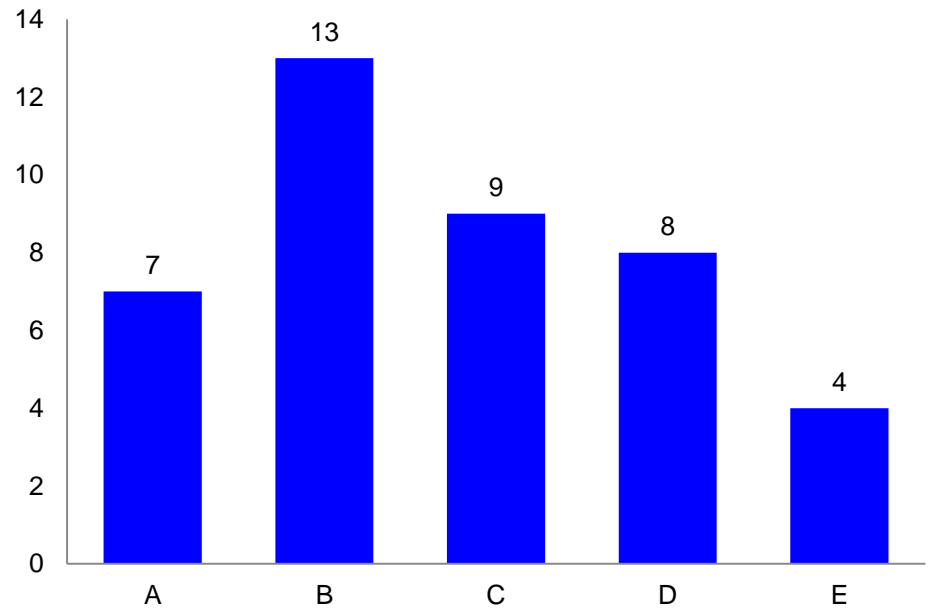


## Set of program session questions 6 of 8

### Question

During the ECEDHA conference, I'd like us to have a panel discussion on "entrepreneurship and technology transfer"

- A. Strongly agree
- B. Agree
- C. Neutral
- D. Disagree
- E. Strongly disagree



## Set of program session questions 7 of 8

### Question

During the ECEDHA conference, I'd like us to have a panel discussion on "how other departments (like ME, CS, BME, etc.) promote their disciplines

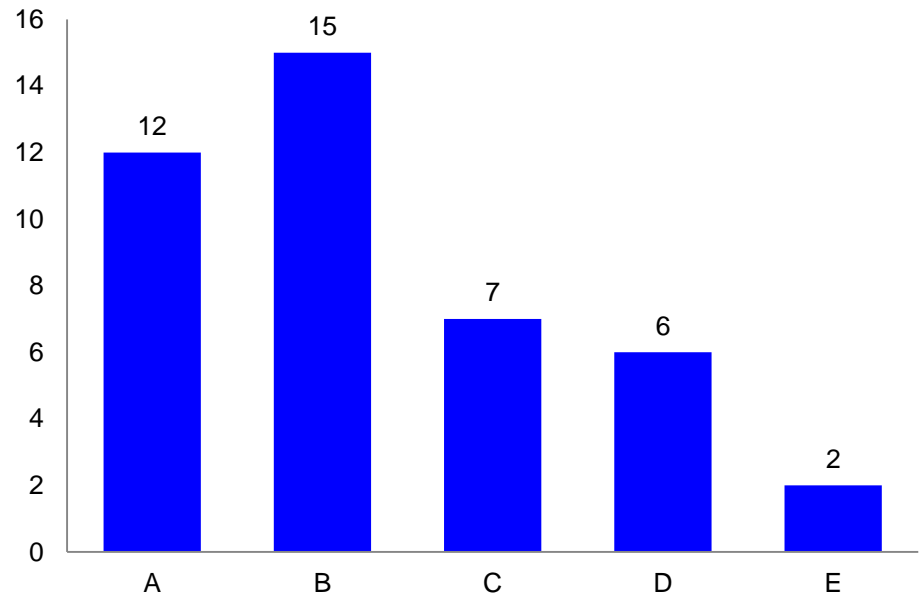
A. Strongly agree

B. Agree

C. Neutral

D. Disagree

E. Strongly disagree



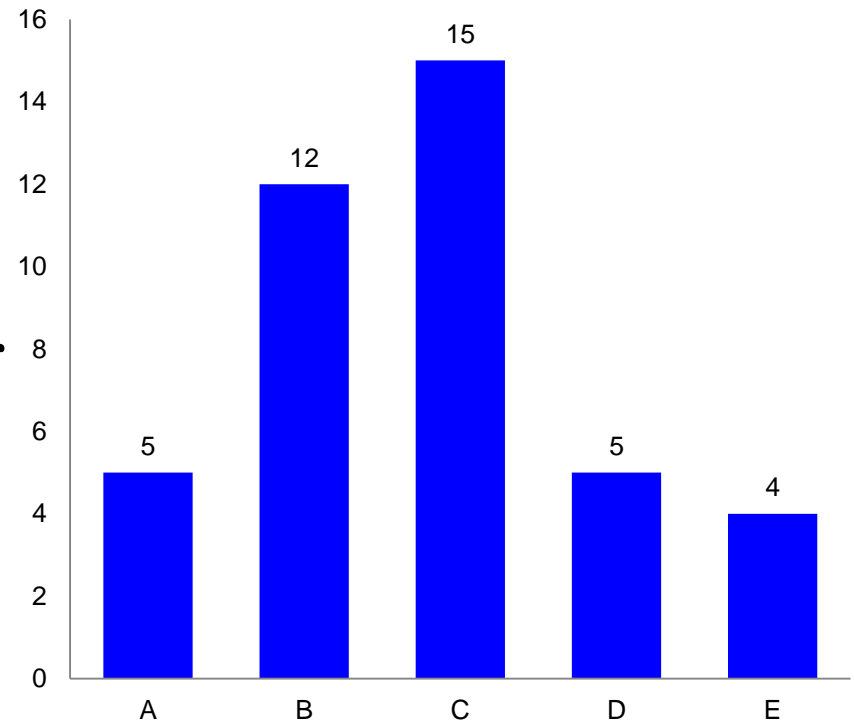


## Set of program session questions 8 of 8

### Question

Which one of the following topics would you like to see in next year's program:

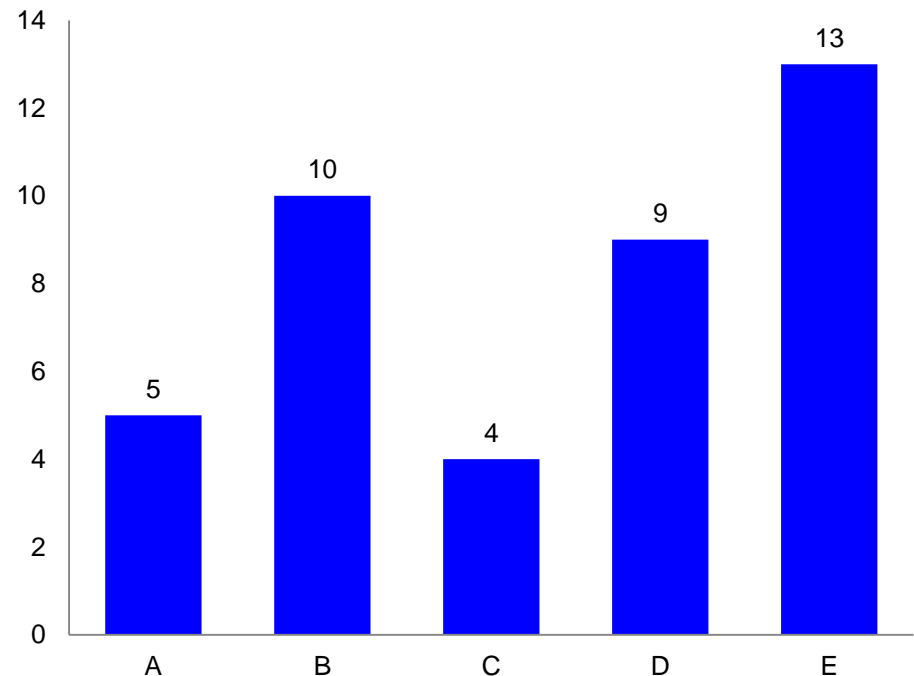
- A. Analytics
- B. Entrepreneurship  
and technology transfer
- C. Is IEEE doing enough  
to promote ECE
- D. Rebranding of ECE
- E. Smart grid



# Question

We should charge a slightly higher fee for ECEDHA participants and not charge for spouses to attend in order to increase attendance?

- A. Strongly agree
- B. Agree
- C. Neutral
- D. Disagree
- E. Strongly disagree





The next set of questions pertain to the ECE Source, ECEDHA's newsletter

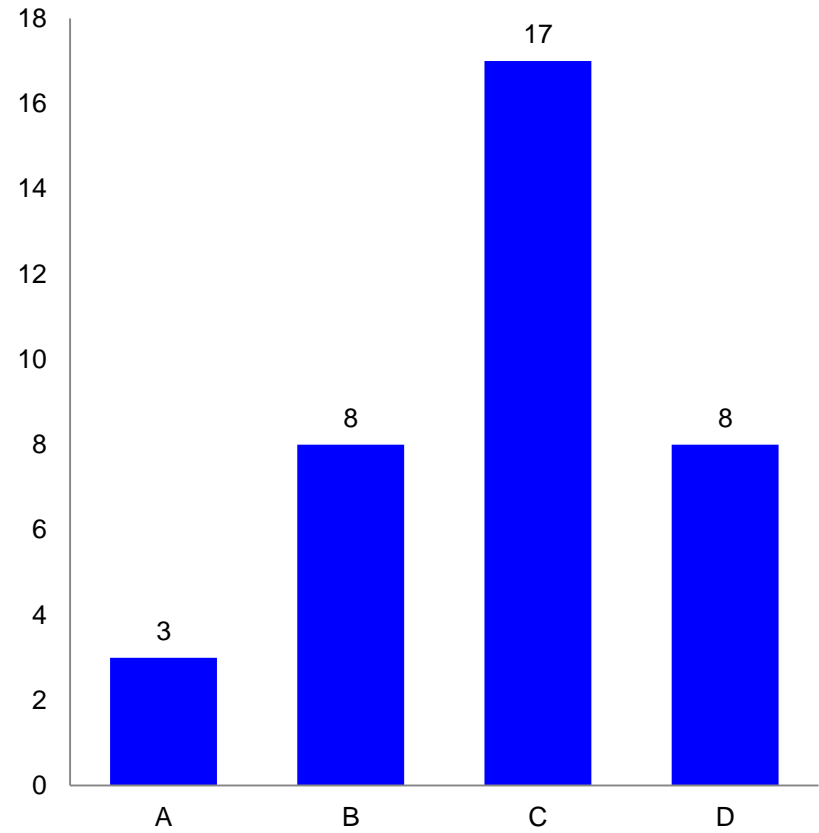
**ECEDHA**

Electrical and  
Computer Engineering  
Department Heads Association

# Question

How often do you read the ECE Source?

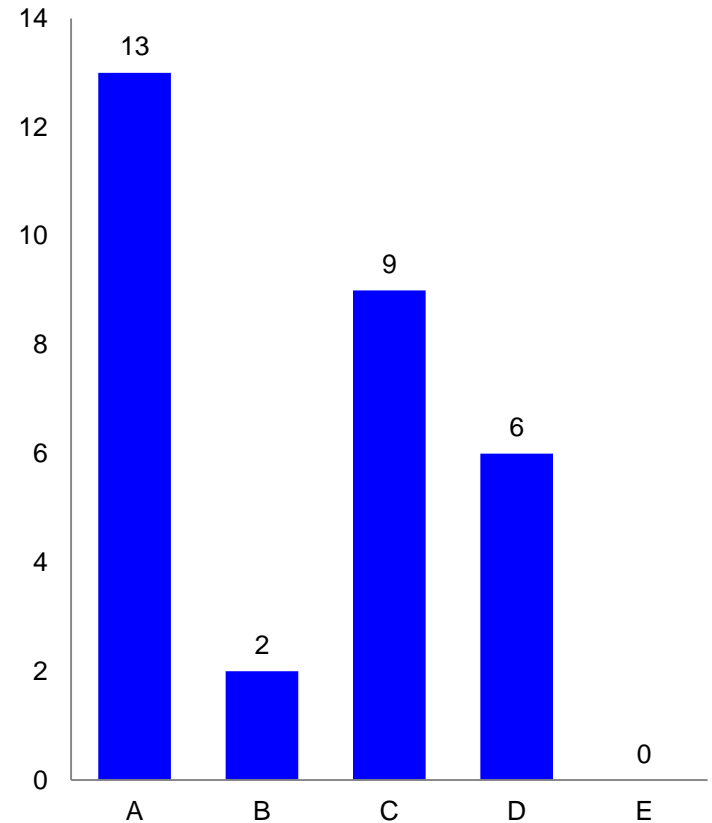
- A. Always (every issue)
- B. Frequently (most issues)
- C. Occasionally (some issues)
- D. Never



# Question

The ECE Source section I like **best**:

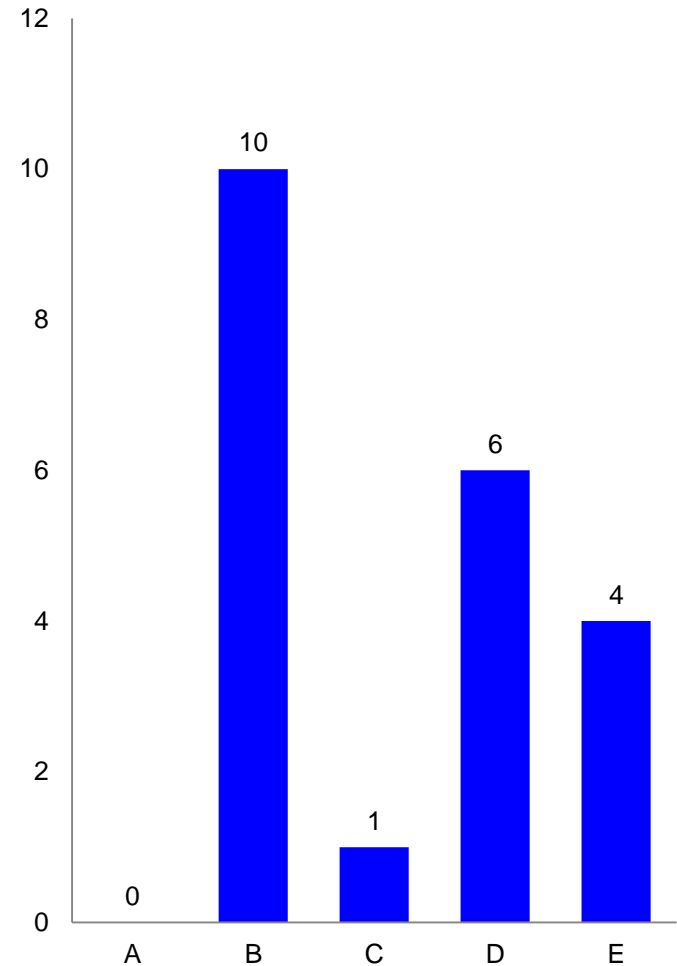
- A. Featured articles
- B. Sponsored articles from corporate partners
- C. ECE in the News — relevant articles from various news sources
- D. ECEDHA News — Association news and announcement
- E. ECEDHA Member & Partner News — announcements on behalf of members and others



# Question

The ECE Source section I like **least**:

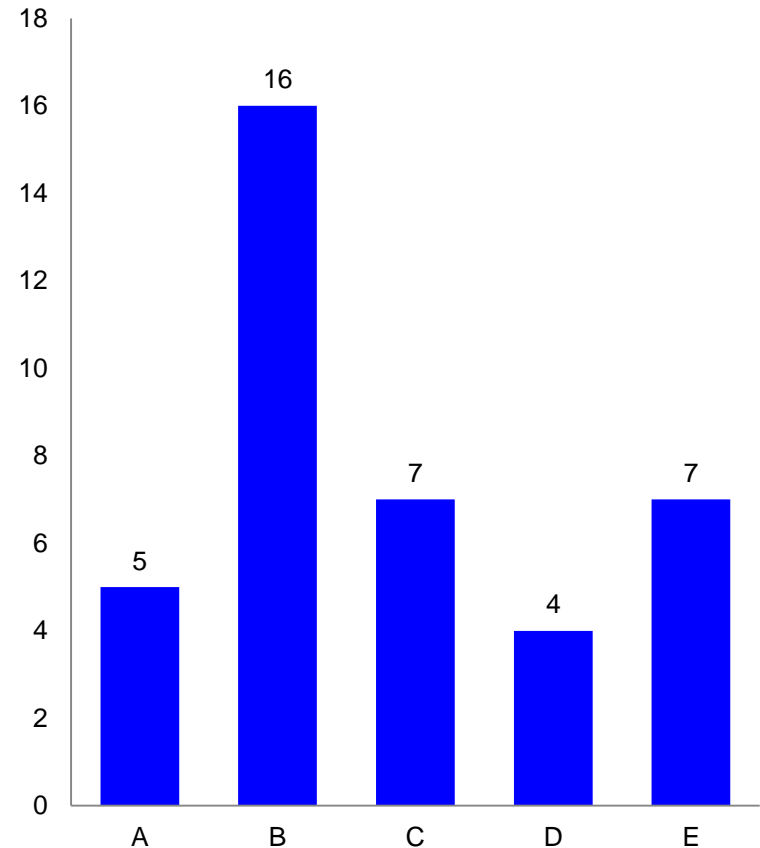
- A. Featured articles
- B. Sponsored articles from corporate partners
- C. ECE in the News — relevant articles from various news sources
- D. ECEDHA News — Association news and announcement
- E. ECEDHA Member & Partner News — announcements on behalf of members and others



# Question

What percent of your budget is flexible and under your control?

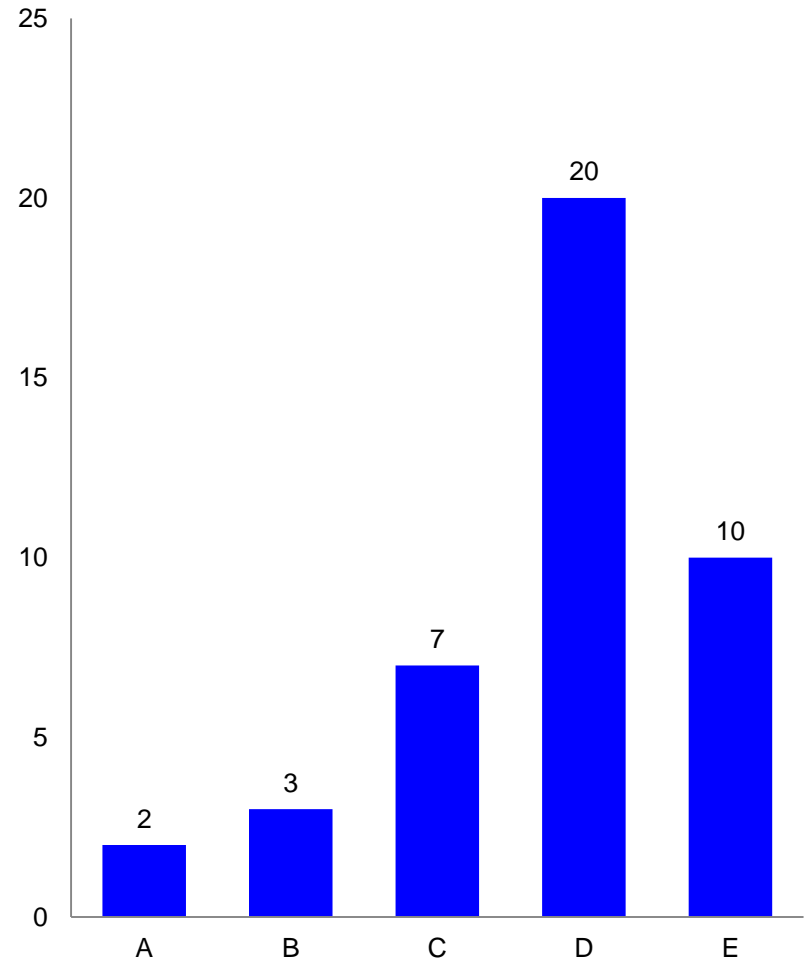
- A. Less than 1 percent
- B. Between 1 and 5 percent
- C. Between 5 and 10 percent
- D. Between 10 and 20 percent
- E. More than 20 percent



# Question

How much control over the strategic directions for the department is there at the department level.

- A. Very little, as this is effectively decided at upper levels of university.
- B. Very little as we are so overloaded there is very little time to think about this sort of thing.
- C. Very little, as we do not have financial resources to undertake major initiatives.
- D. A reasonable amount of control.
- E. A lot of control.

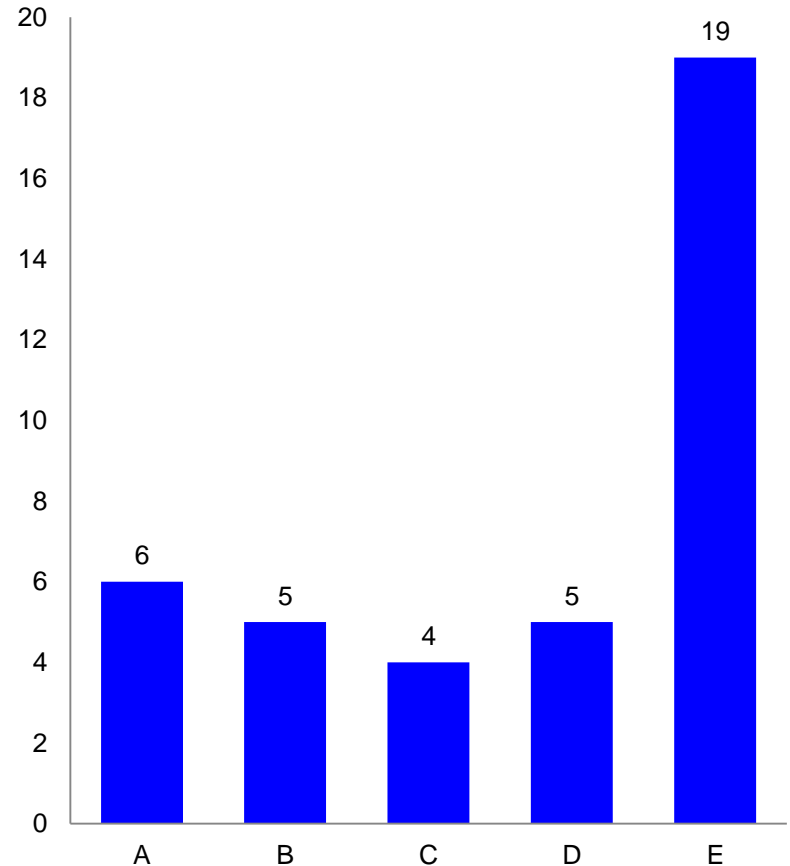




# Question

My university/college returns a portion of the tuition revenue back to my department.

- A. Yes. We receive a percentage return
- B. Yes. But only for certain programs, such as our professional Masters Degree program.
- C. The budget is not by formula but set by the dean
- D. Our budgeting process is a mystery to me
- E. Other

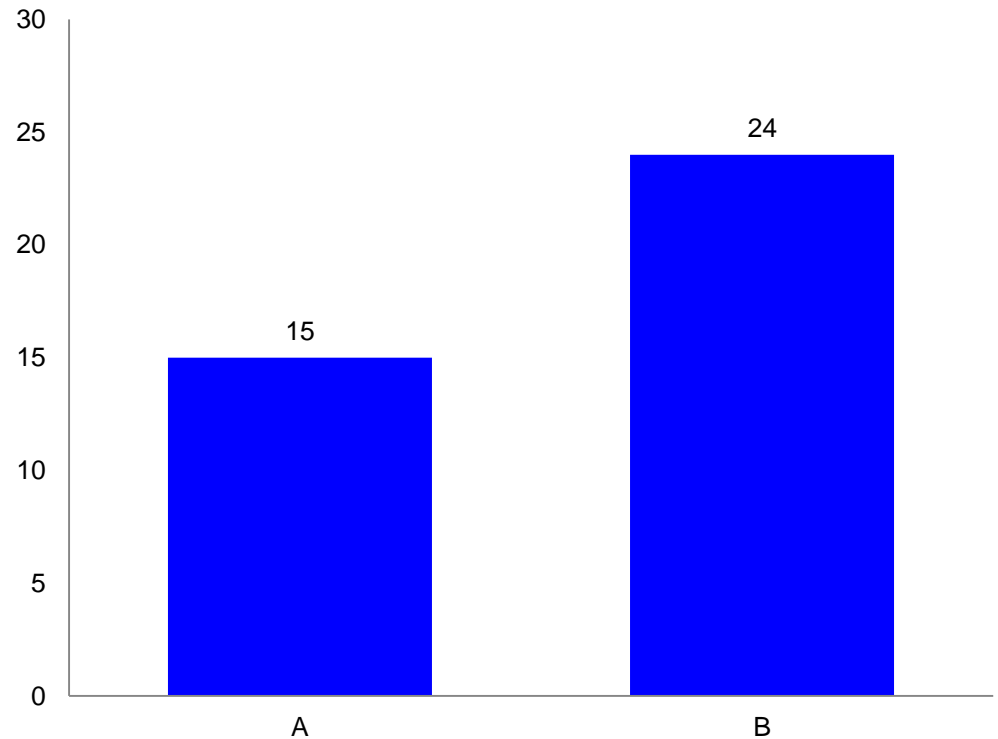


# Question

My university/college returns a portion of the tuition revenue back to my department.

A. Yes

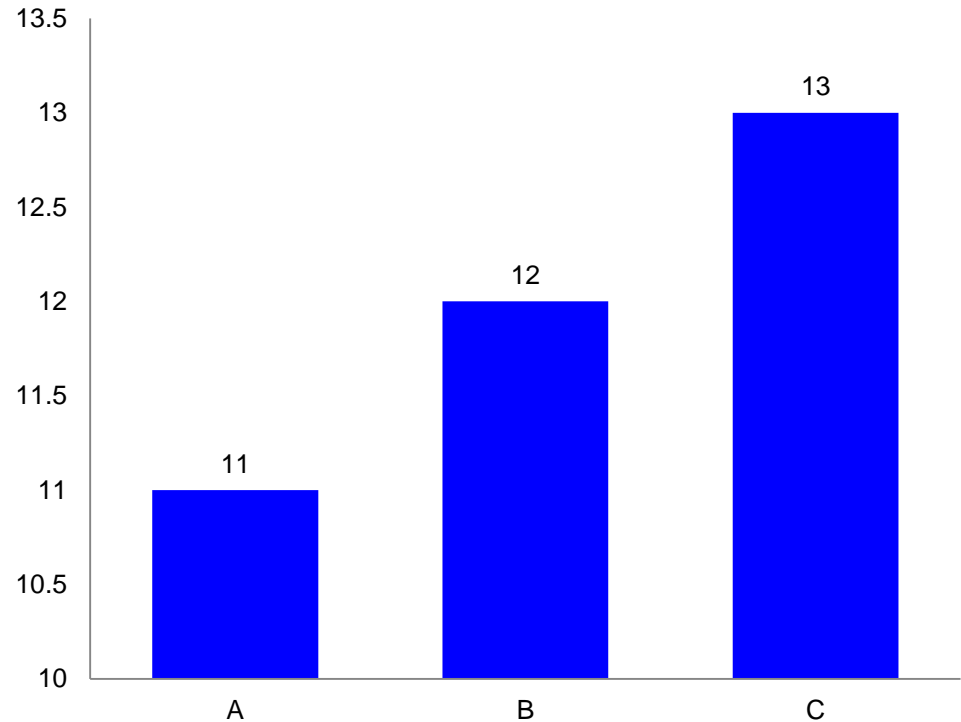
B. No



# Question

I am concerned about student debt load for students in my department

- A. Yes
- B. No
- C. Not sure

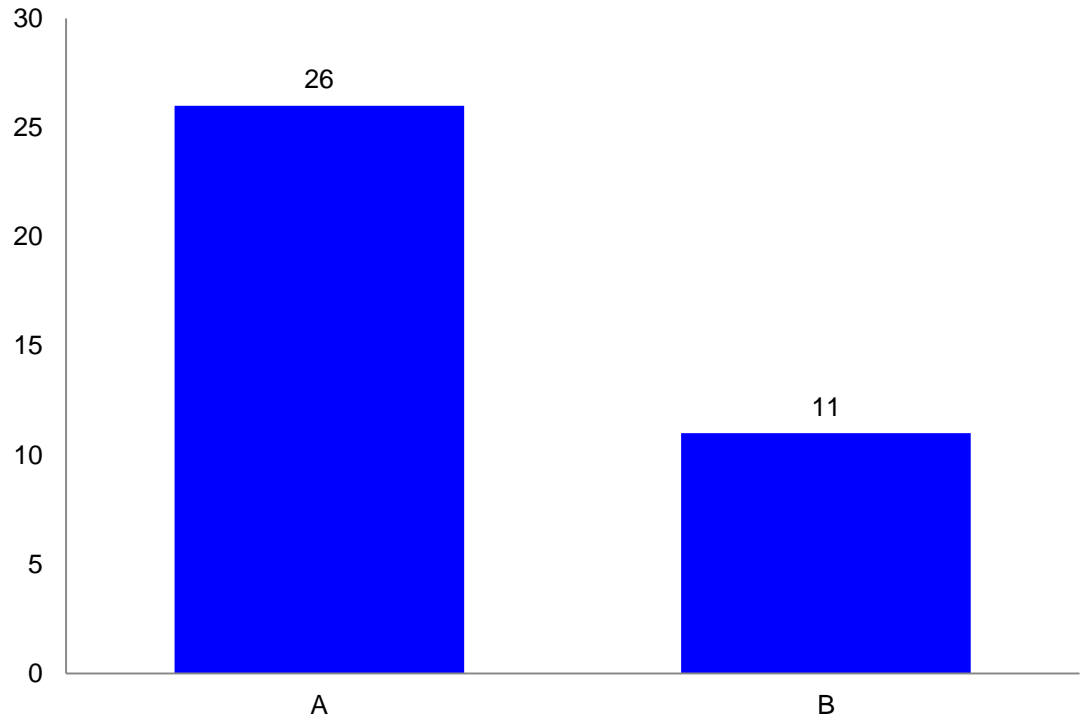


# Question

I am concerned about the rising cost to recruit faculty.

A. Yes

B. No

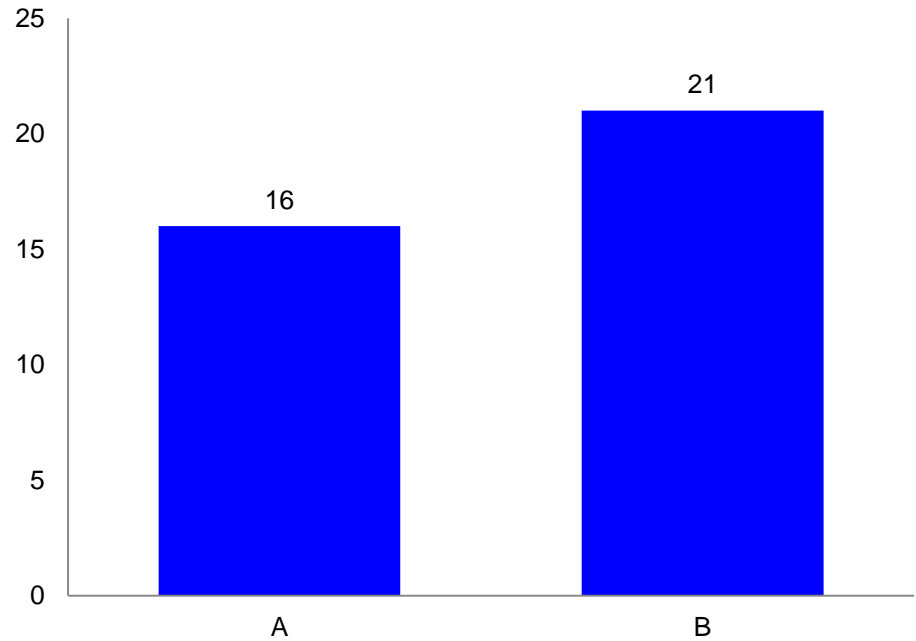


# Question

My department has special programs to help recruit women and underrepresented minorities into the undergraduate program.

A. Yes

B. No

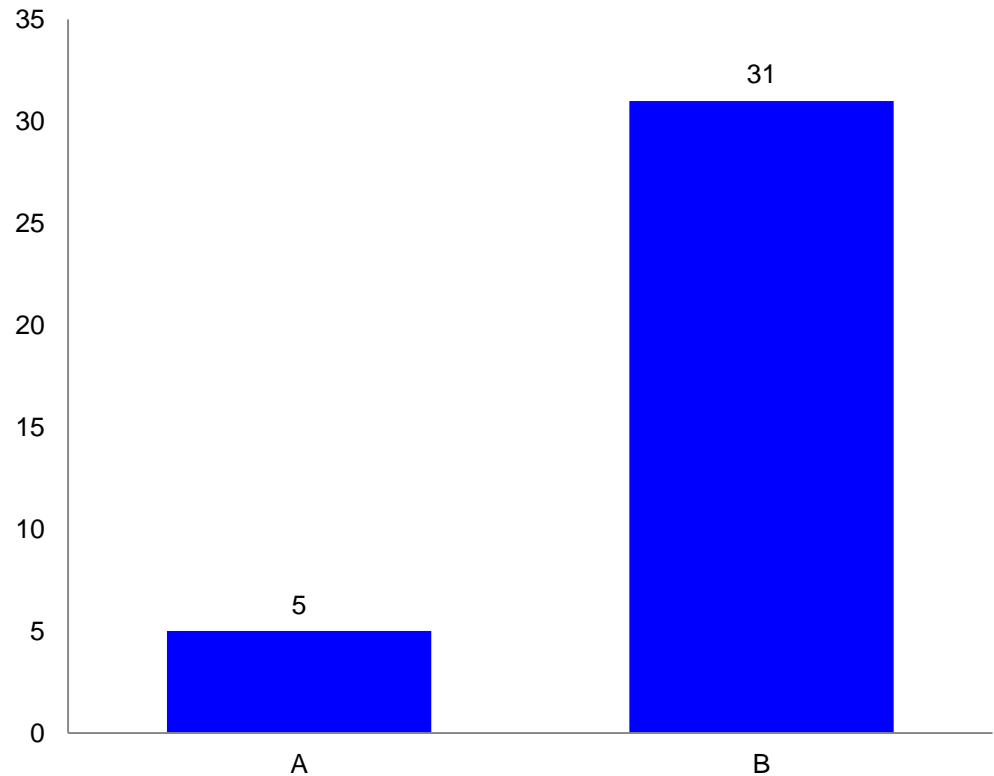


# Question

My department is succeeding in recruiting women into the undergraduate program.

A. Yes

B. No

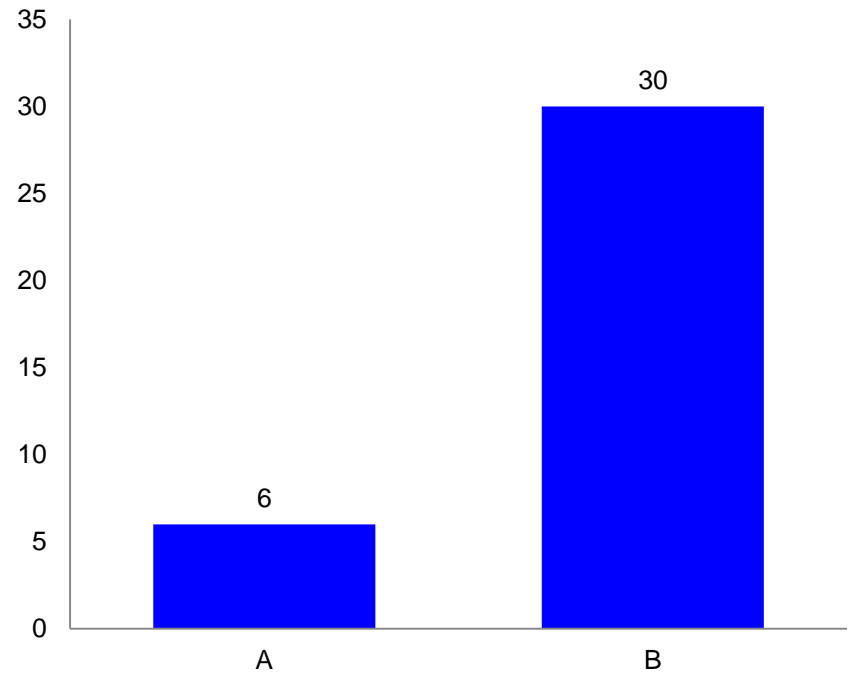


# Question

My department is succeeding in recruiting underrepresented minorities into the undergraduate program.

A. Yes

B. No

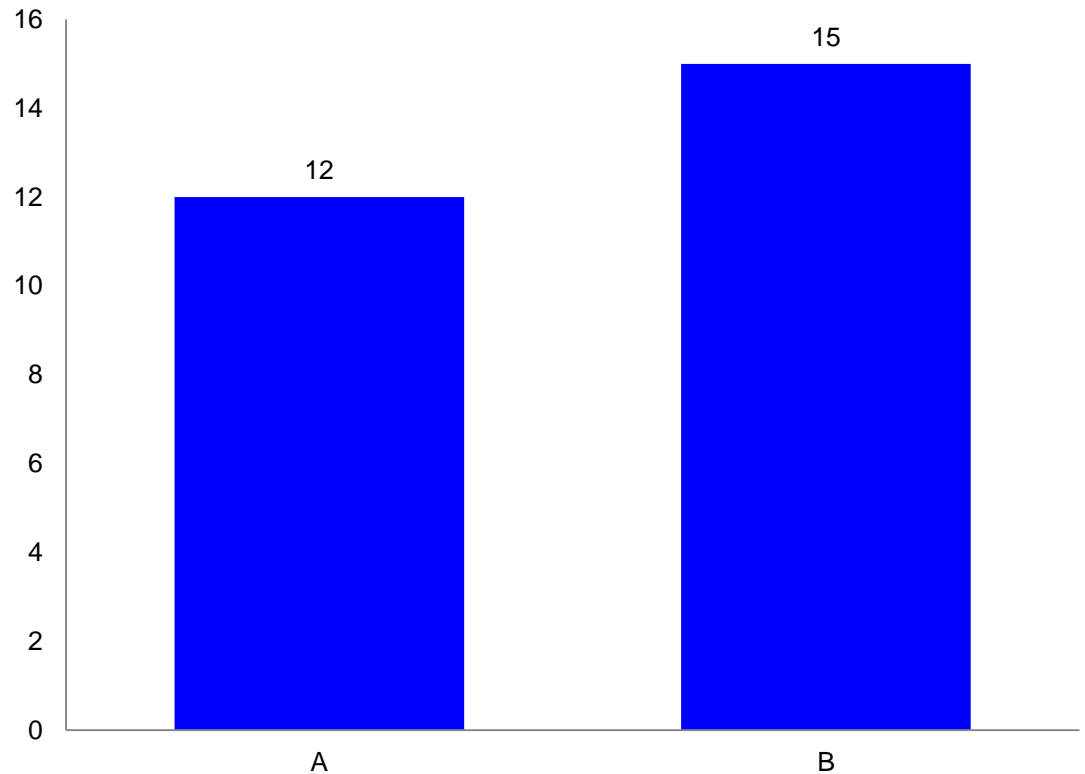


# Question

My department has initiatives to increase the domestic graduate student enrollment.

A. Yes

B. No





# The End

**ECEDHA**

Electrical and  
Computer Engineering  
Department Heads Association